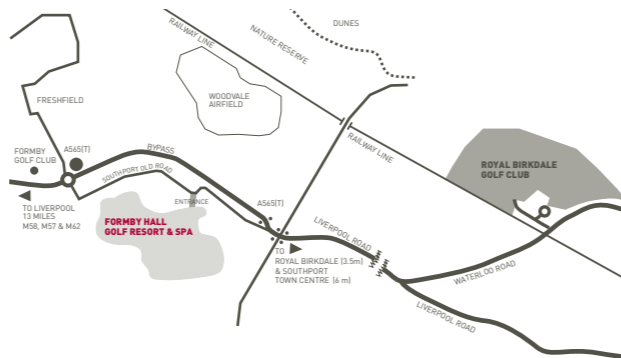




GOLF AT
FORMBY HALL



You're in the right *place*,
find us at the heart of England's Golfing Capital.

Travelling from Manchester

Leave the M62 and join the M57 for Southport. Bear left at junction 7 onto the A59 and head for Southport. Turn left onto Dunning's Bridge Road (A5039). Turn right onto the A5207. At traffic lights turn right onto the A565. Travel straight on, at 2nd roundabout turn right onto Southport Old Road. Continue on Southport Old Road. Entrance to Formby Hall Golf Resort & Spa is on the right.

Travelling from Liverpool & Chester

From the Wallasey Tunnel (M53) keep right, merge onto Scotland Road (A59). Turn right onto the A5053 (Widnes, Liverpool Airport). Turn right onto the A565 (Southport). Continue into Crosby and turn right at traffic signals (Southport). Travel straight on, at 2nd roundabout turn right onto Southport Old Road. Continue on Southport Old Road. Entrance to Formby Hall Golf Resort & Spa is on the right.

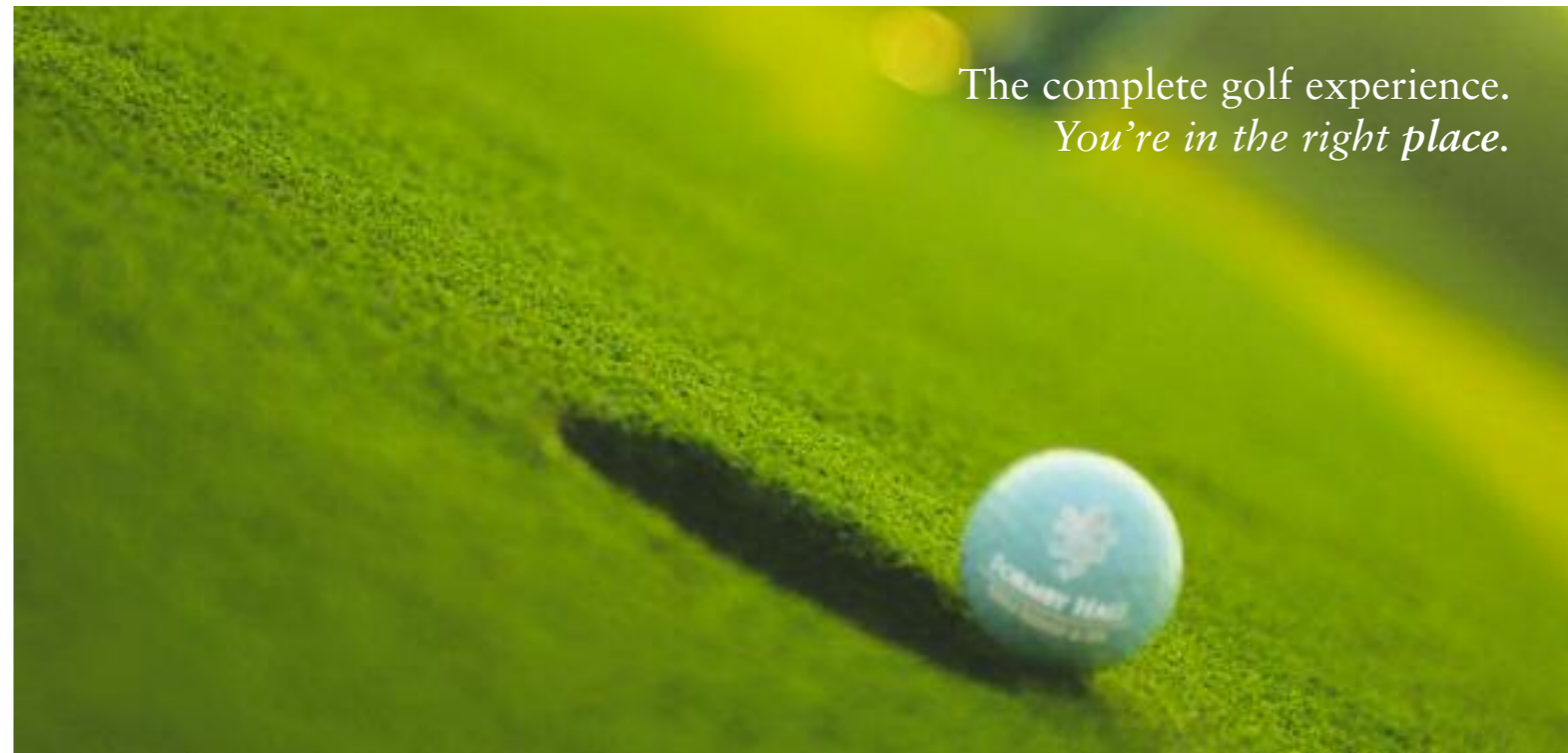
Travelling distances

Royal Birkdale	3.5 Miles
Southport	6 Miles
Aintree Racecourse	11 Miles
Liverpool	13 Miles
Liverpool Airport	25 Miles
Manchester City Centre	40 Miles
Manchester Airport	45 Miles
Chester	41 Miles

Formby Hall Golf Resort & Spa, Southport Old Road, Formby, Southport, L37 0AB.
T +44 (0)1704 875 699 www.formbyhallgolfresort.co.uk



© PGA is a registered trademark of The Professional Golfers' Association Limited



The complete golf experience.
You're in the right place.



FORMBY HALL
GOLF RESORT & SPA



Golf at Formby Hall Golf Resort & Spa. *Everything falls into **place**.*

It's that moment where anything can happen...

A swing, a connection, and then the world stops for a second, and waits. Suddenly it's just you and the ball, and nothing else matters. What happens next is up to you.

Come to Formby Hall Golf Resort & Spa and discover a golfing experience like no other. A picturesque parkland setting created to challenge and inspire. A true escape from the everyday. A place created for relaxation and luxury.

As an established venue for the European Challenge Tour, the European Professional Seniors Tour, English Seniors Open, plus many high quality charity and pro-am events, Formby Hall promises golfers of any calibre a round they're sure to enjoy, and not likely to forget.

With the 18 hole course ranked amongst the best in the UK, a uniquely testing 9 hole inland links course, and the country's first PGA National Residential Golf Academy, come and put your game to the test in the heart of England's golf coast, and leave all the richer for it.

There's nowhere quite like it for business and corporate entertainment, and with its first class golf amenities complemented by 4 star luxury 62 bedroom hotel and state of the art leisure and relaxation facilities, you've a venue custom made for conferences, golf days and events.

Learn. Play. Relax. Entertain. Reward.



The Old Course at Formby Hall Golf Resort & Spa.

Golf at its best.

**Skill. Concentration. A cool head.
A steady hand, and a little luck.**

There is no secret to success on The Old Course. There are no easy holes. Each has been expertly created to test every aspect of your game.

Many have been drawn to the par 72 course, their interest piqued by its endless challenges and natural splendour. Little wonder it's ranked amongst the finest championship golf courses in the UK, and an established venue for the European Challenge Tour and the European Professional Seniors Tour, The English Seniors Open.

Set in 135 acres of beautiful rolling parkland, don't let the picturesque surroundings lull you into a false sense of security. This is no walk in the park.

The Old Course offers a different diverse challenge around every corner, over tree-lined fairways, lakes and ponds, large rolling greens and devilish reveted bunkers. Each feature and obstacle is strategically placed to up the stakes and test your mettle.

Every part of your game is sure to come under scrutiny, but anyone who loves golf should relish the examination.

Course Yardages

- Championship Tee's : 6993 Yards Par 72 (SSS 74)
- White Tee's : 6735 Yards Par 72 (SSS 73)
- Yellow Tee's : 6416 Yards Par 72 (SSS 71)
- Red Tee's : 5619 Yards Par 73 (SSS 73)

Signature Hole, Little Venice Hole 16 - Par 3 - 189 yards

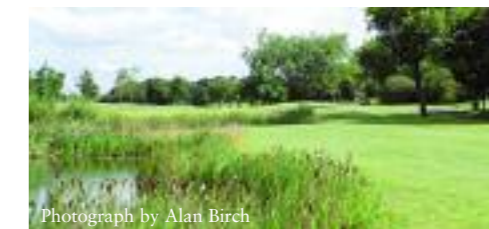
From the moment you tee off, every shot counts and the right club selection is crucial.

You'll be facing a strong, prevailing wind, which can make the simplest shot a stern test for any player, so you'll need to be on top of your game.

A tantalising Par 3 with 170 yard carry over water, and 6 well placed greenside bunkers waiting to catch any errant tee shot, you'll need to hit each shot with surgical precision, as there's very little margin for error.



Photograph by Alan Birch



Photograph by Alan Birch





Par 3 Course.

Experience the real challenge of links golf at Formby Hall Golf Resort & Spa.

The Par 3 course is a unique 9 hole inland links course, and one that's sure to capture any player's imagination, testing for the experienced golfer wanting a quick challenge, but also accessible to beginners.

Golfers love links courses, and Formby Hall's is one of the UK's finest. Blending a treacherous range of natural terrain and man-made obstacles, the course ensures things can and will get difficult.

Whether it's finding your range on the large undulating greens or skillfully avoiding the perils of three large lakes and carefully laid pot bunkers, you'll soon discover skill rather than brute force will see you through, and only the canniest of golfers will come out on top.

Course Yardages

- White Tee's : 1374 Yards Par 27
- Yellow Tee's : 1278 Yards Par 27
- Red Tee's : 1074 Yards Par 27

Signature Hole. Hope Island.
Hole 6 - Par 3 - 129 yards

You'll need more than just hope alone to complete this Hole. It's deceptively short yardage means each shot has to be perfect, and requires the coolest of heads in the face of adversity, accurate club selection is crucial, and only the boldest golfer will survive.

Add to that the difficulty posed by the aggressive crosswinds, the stronger it blows, the higher the score, so the pursuit of an elusive Par 3 is the kind of challenge that you can't help but accept.

PGA National Residential Golf Academy.

Bringing golf to the fore.

Every drive. Every chip. Every putt.
Every swing. Every shot.

Let Formby Hall Golf Resort & Spa enhance every aspect of your game.

Experience the UK's first PGA Residential Golf Academy, and discover the ultimate place to improve your golf.

Whether for just a short coaching session or a luxurious residential stay in the resorts top class accommodation, at Formby Hall you can enjoy the full benefits of fully qualified PGA coaches using the latest cutting edge golf technology.

Boasting a 26 bay driving range, specialist indoor teaching bays, fitted with the latest digital swing analysis systems in radar tracking technology, enabling a more in-depth analysis of your swing and game.

By highlighting key factors in your performance, you'll focus on your specific needs and strengthen your weaknesses in no time at all. We even offer a private custom-fit service to assess your equipment and work with the Golf Shop team to make expert recommendations that'll improve your performance. Plus what better place to practice than on one of

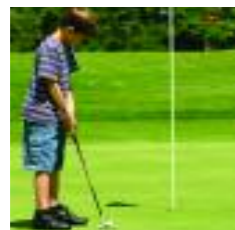
Formby Hall's Championship courses or specialised driving ranges?

Either alone or in a group, you'll receive only the finest personalised service, with instructional programmes tailored to your needs, and a range of packages to suit the time and budget requirements of golfers of any age or ability.

We're dedicated not just to raising your game, but raising your enjoyment of the game through improved performance, so you can be sure you'll receive the most from your stay.



Photograph by Alan Birch



PGA[®]
UK's Only PGA National
Residential Golf Academy



Corporate Golf.

Escape the workplace and let your mind wander onto the green.

With its accessible location, 4 star luxury and unrivalled golf, Formby Hall Golf Resort & Spa is the ultimate venue for corporate training and staff bonding sessions.

Offering both rich natural beauty, and stately elegance, it's somewhere you can unwind, clear your head and think productively, free from stress and interruption. Once your work is done, the real business can begin.

Formby Hall is a place where reputations can be left in the boardroom and anyone can become boss out on the course.

With the magnificence of the 18 hole Old Course waiting for you, and up to 144 of your colleagues or clients, you've a challenge that's sure to satisfy golfers of any ability, from the experienced campaigner, to the fresh faced beginner. Each hole provides a different, unique test of your golfing ability, and will both frustrate and delight, ensuring a day of pure golfing pleasure.

Corporate Golf Packages
The Birdie & Eagle Packages provide a choice of Corporate Golf Day's which include 18 holes on the Old Course and lunch or dinner in the restaurant.
For further information or to discuss a bespoke package, our specialist golf co-ordinator is on hand to help with any questions you may have.





Society Golf.

*Time spent playing the game you love.
People you love spending time with.*



Society golf is the perfect way to spend some quality time with friends and colleagues in an informal environment, and a day at Formby Hall Golf Resort & Spa is one sure to last long in the memory.

Boasting one of the UK's best 18 hole Championship parkland courses, put your game to the test and tread in the footsteps of the many great golfers who have pitted themselves against the famous Old Course over the years. Every fairway and

green, every bunker and pond, each aspect of the course has been finely crafted to give you a thorough test of your abilities, and provides a unique challenge for any golfing enthusiast, whatever their level.

Packages include brunch, 18 holes of golf and a main course meal with coffee, so once your game is done, you can raise a glass to the victor and celebrate the occasion in imitable style.

Society Golf Packages

At Formby Hall, our golf packages are seasonal. The Summer Society Golf Package is available from 1st April to 31st October and the Winter Society Golf Package available from 1st November to 31st March.

For further information or to discuss a bespoke package our specialist golf co-ordinator is on hand to help with any questions you may have.

Golf Membership.

Just the right place to raise your game.

When you find somewhere special, you want to go back. When you do something you love, you'll do it again.

So why should the unique experience you enjoy at Formby Hall Golf Resort & Spa just be a one off?

From the driving range to the golf courses, all the golf you could wish for is right here, waiting for you.

Practice dawn till dusk, whatever the weather. We're confident you'll find a luxurious golfing environment meticulously crafted to raise your game.

As a member you'll benefit from the best the resort has to offer, both on the course and off.

Whether it's going head to head on one of the UKs finest Championship golf courses,

sharing an intimate drink or a relaxing spa treatment, you're assured of a truly memorable experience with every visit.

There are a range of options available, created to give you the right membership for your individual requirements. For further information speak to a member of our experienced golf team at the Golf Shop.

Golf Shop.

The right choice. The right advice.

Step out onto the first Tee at Formby Hall Golf Resort & Spa, and you're ready to become a serious player.

So, when you come to Formby Hall premier golf brands shop, you will be able to look the part as well as play the part with the world class clothes and equipment to match.

Our helpful team are here to help you fulfil your true golfing potential and improve as a player whatever your level. Whether you're new to the sport, or a seasoned pro, we'll assess your needs and provide the expert guidance to find what's right for you.

By considering aspects such as age, physique and technique, we're able to provide you with a choice of golf apparel to complement and develop your game, because at Formby Hall, we believe the right equipment can make a better golfer. It's the knowledge and experience of our team that ensures you can shop in complete confidence.

Whether buying for yourself, or choosing a gift for the golf lover in your family, you'll find all the choice you need. The Formby Hall Golf Shop offers an impressive range of high quality golf gear from

internationally renowned brands. Names synonymous with success.

Leisurewear from Oscar Jacobson, Peter Scott, Ashworth, Adidas, Footjoy, Fairway & Greene, and Galvin Green, plus equipment by names including Titleist, Callaway, and TaylorMade.

Serious names for the serious golfer. They're not just clothes or equipment; they're a statement of intent.



Photograph by Alan Birch



EQUIPMENT FOR YOUR BODY

Hotel, Spa, Leisure and Business.

Quality drives through every detail.

At Formby Hall Golf Resort & Spa it's not only the golf that's world class.

You'll find every aspect of the resort has been meticulously created to match the same high standard, to ensure complete satisfaction.

From the moment you arrive, you'll be welcomed by breath taking rolling scenery and immersed in an exclusive world of elegance, style and quality.

Our lavish 62 bedroom 4 star hotel combines the best modern facilities with traditional elegance. Dine in our sophisticated restaurant or share tales of your days play with other like minded

golfers in the 19th hole bar. Once you're ready to call it day you'll find each room is beautifully designed and exquisitely furnished to make your stay worthwhile.

Take relaxation one step further at the Spa and immerse yourself in a total pampering experience. The Spa boasts an indulgent range of award winning treatments and facilities, and is sure to leave any guest revitalised and rejuvenated.

If you'd prefer to unwind by raising your pulse, the Formby Hall Leisure Club has all you could need, from the large heated 20m indoor swimming pool, to state of the art Gymnasium, steam room, spa and more.

With its superb location, and panoramic views of the course and grounds, Formby Hall is an inspiring place for business. We've all the spacious rooms and suites you could need, complete with the latest facilities and conferencing equipment. Combined with Formby Hall's Championship golf and amenities, it makes for a very persuasive proposition.

Whatever your requirements, talk to us and we'll make sure you make the most of your stay. We've a feeling it won't be your last.



The complete golf experience.
You're in the right place.

